

# 2021 Policy Council Meeting

---

October 27, 2021

4 - 5:30 PM New York

## CHECKIN

How might we better support  
practitioners?

## QUESTIONS OR COMMENTS

Enter HU in chat OR enter your  
question or comment

<http://bit.ly/SDSpcnotes>

# President's Welcome

---



**Paulo Gonçalves**

Università della Svizzera Italiana

# Agenda

---

- 0:05 Welcome (Birgit Kopainsky)
- 0:10 VP Membership (Asmeret Naugle)
- 0:15 Investment Committee #2 (Eliot Rich)
- 0:30 VP Finance (Eliot Rich)
- 0:15 Frankfurt 2022 Budget (Sara Metcalf)
- 0:15 Future Conference Discussion (Sara Metcalf)
- Adjournment

# Motions in 2021

---

## IN PROCESS

- Motion to Approve Membership Changes, Asmeret Naugle (Today - voice vote)
- Motion to Approve 2022 Budget, Eliot Rich (Electronic Vote after Meeting)
- Motion to Approve 2022 Asset Designations, Eliot Rich (Electronic Vote after Meeting)

## PASSED

- **(1033) 2023 Program Chairs, Sara Metcalf (Y:20/N:0/A:0/NV:4)**
- **(1032) Adoption of Investment Policy, Eliot Rich (Y:12/N:0/A:1/NV:11)**
- **(1030) VP Meetings, partial term (remainder of 2021), Birgit Kopainsky (Y:18/N:0/A:1/NV:6)**
- (1031) F2F Approval May, June 2021 Minutes, Brad Morrison
- (1028) F2F Constitution of Taiwan Chapter of the SDS, Stefano Armenia
- F2F - Standing Committee Nominations, Paulo Gonçalves
- F2F - Performance Review Committee Motion, Birgit Kopainsky

# VP Membership

---



**Asmeret Naugle**

Sandia National Laboratory

- Membership Changes 2022

# Membership Pricing

---

Increase regular membership price from \$140 to \$145 for general membership in line with a 3% CPI increase (this year is currently tracking above 5%). Discounted and student prices would be the same.



# Renewals

---

Shift from a calendar year membership to a membership that lasts one year from the join date



# Multi-Year Payments

---

Allow multi-year payments for up to 3 years with no discount (assuming annual price increases discounts will be de facto)

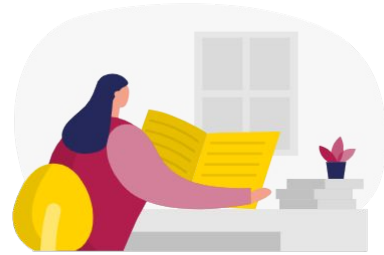




# SDR Price

---

Increase SDR print copies price from \$25 to \$30



# Motion to Approve Membership Changes

*Moved by Asmeret Naugle*

---

## Membership Changes 2022

- **Membership Pricing** - Increase regular membership price from \$140 to \$145
- **Multi-year Payments** - Allow membership multi-year payments
- **SDR Print Pricing** - Increase annual Journal dues from \$25 to \$30

# VP Finance

---



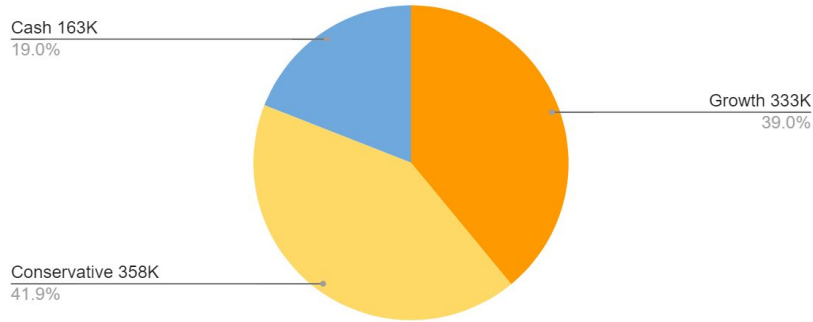
**Eliot Rich**

University at Albany

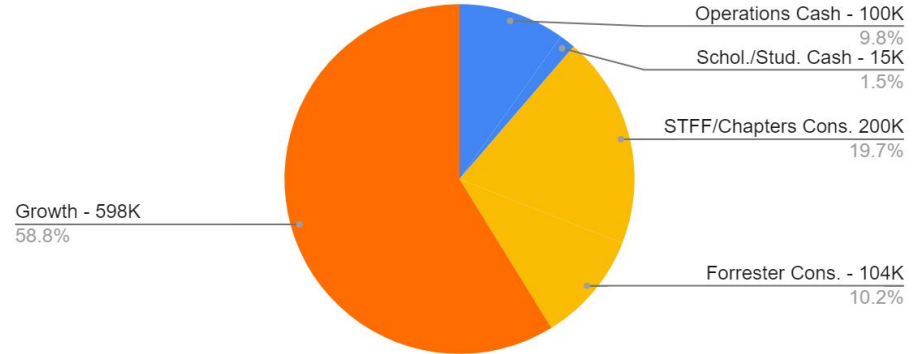
- Investment Policy has been adopted, thank you!
- Budget Proposal from Finance Committee will be posted by 10/29.
  - Near break-even NOI!
  - Hybrid conference
  - More program fundraising to fund new sponsored programs
  - Membership retention assumed
  - Stewardship self-funds (at minimum)

# Investment Committee Recommendations

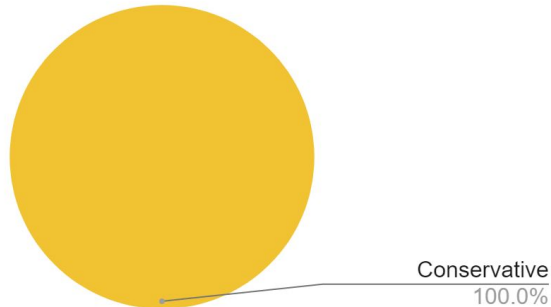
2021 Starting Operating and reserves - 854K



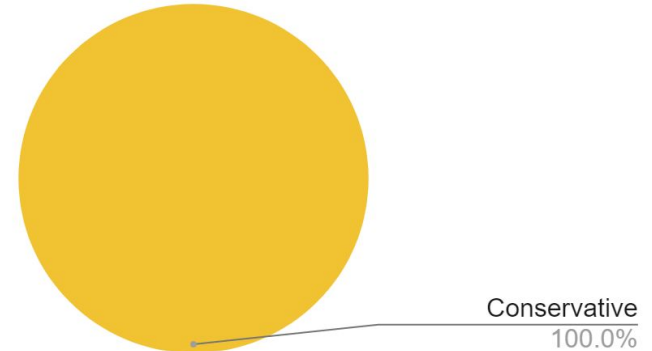
2022 Planned Operating and reserves - 1,017K



2021 Starting Restricted - 271K



2022 Planned RF - 308K



# Proposed Reserve Designations

## Proposed designations for Reserves (2022)

From Investment committee report

Updated for estimated EOY expenditures 10/24/2021

Capital Reserve

### Proposed Designations

Operations Cash

Chapter Development / Staff

JWF award reserve

Restricted

DMA1

DMA2

Unrestricted      Restricted

\$ 490,095

\$115,000

\$200,000

\$104,000

\$ 287,000

\$ 21,000

\$ 1,217,095

\$ 909,095

\$ 308,000

Provides income for programs / JWF

Provides income for DMA

# Motions for Electronic Vote will come with the report

---

MOTION: The Policy Council adopts the budget proposed by the Finance Committee for 2022.

MOTION: The Policy Council designates the unrestricted assets of the Society for FY 2022 as proposed by the Finance Committee and the Investment Committee.

# VP Meetings - Frankfurt Conference: July 18-22, 2022

---



**Sara Metcalf**

University at Buffalo

- **Conference Team**
  - Organizing Chairs:  
Jürgen Strohhecker, Jörn-Henrik Thun
  - Program Chairs:  
Gloria Perez Salazar, Nici Zimmermann, Birgit Kopainsky
- **Main Budget Elements (3 contracts)**
  - Facilities at the Frankfurt School of Finance and Management
  - Audiovisual equipment and services needed for hybrid format
  - Catering for breaks, lunch, and banquet
- **System Dynamics Summer School**
  - Online, earlier in month (new general plan going forward)
  - July 5-8, 2022

# ISDC 2022 Budget Factors

<b>Member Registration Fee</b>	<b>VIRTUAL</b>	<b>IN PERSON</b>
Early Bird Price (before June 9)	\$325	\$650
Regular Price (after June 9)	\$400	\$725
Onsite Price (after July 11)	N/A	\$800
Application Day (Thurs July 21)	N/A	\$200

Staff Travel	\$7,911
Venue Costs*	\$5,073
Zoom/Online Costs	\$2,000
AudioVisual Costs	\$27,065
Exhibitor Costs	\$5,102
Catering for 400 people	\$43,996
Transit Passes for 400 people	\$1,132
<b>TOTAL ESTIMATED EXPENSES</b>	<b>\$92,279</b>

\*Room costs are free to the Society as part of the Frankfurt host sponsorship. Listed venue costs include room setup and cleaning.



# Conference Threads and Preliminary Schedule

Conference Theme: **Diversity**

Conference Threads:

1. Business and Strategy
2. Diversity (special for 2022)
3. Economics
4. Environment and Resources
5. Health
6. Learning and Teaching
7. Methodology
8. Operations
9. Psychology and Human Behavior
10. Public Policy
11. Security, Stability, and Resilience
12. Stakeholder Engagement
13. Transport and Mobility (new)

<https://bit.ly/isdcThreads>

	Boston	Frankfurt	Beijing	Monday July 18	Tuesday July 19	Wednesday July 20	Thursday July 21	Friday July 22
				<i>colloquium and PC day</i>	<i>chapter and SIG day</i>	<i>poster day</i>	<i>application day</i>	<i>workshop day</i>
	2:00	8:00	15:00	<i>Morning announcements sent electronically</i>				
	2:30	8:30	16:00	Policy Council	Opening Ceremony	Presidential Address	Plenary	Workshops
	3:00	9:00	17:00		Plenary	Jay W. Forrester Award Presentation		
	3:30	9:30	18:00		Coffee Break Chapter and SIG meetings	Coffee Break and virtual poster session	Coffee Break and model expo	Coffee Break
	4:00	10:00	19:00		Parallel/WIP/Feedback	Parallel/WIP/Feedback	Parallel/WIP/Feedback	Workshops
	4:30	10:30	20:00	Lunch with Welcome Reception and Newcomer Orientation	Lunch with Dana Meadows and Lupina award	Lunch in-person poster session	Lunch with Applications Award Job fair	Lunch with Roundtable Discussion Sessions
	5:00	11:00	21:00					
	5:30	11:30	22:00					
	6:00	12:00	23:00	Student-Organized Colloquium (All Day)	Parallel/WIP/Feedback	Parallel/WIP/Feedback	Parallel/WIP/Feedback	Workshops
	6:30	12:30	0:00		Coffee Break Chapter and SIG meetings	Coffee Break and virtual poster session	Coffee Break and model expo	Coffee Break
	7:00	13:00	1:00		Plenary	Plenary	Plenary incl. closing ceremony	Workshops
	7:30	13:30	2:00					
	8:00	14:00	3:00					
	8:30	14:30	4:00					
	9:00	15:00	5:00					
	9:30	15:30	6:00					
	10:00	16:00	7:00					
	10:30	16:30	8:00					
	11:00	17:00	9:00					
	12:00	18:00	10:00					
	13:00	19:00	11:00					
	14:00	20:00	12:00			Banquet		
	15:00	21:00	13:00					

# VP Meetings - Future Conference Discussion

---



**Sara Metcalf**

University at Buffalo

- **2023 in ACTUAL Chicago - July 23-27, 2023**
  - 12/31/2021 hotel cancellation deadline
  - Program Chairs:
    - John Ansah, Saras Chung, Allyson Beall King
  - still seeking host support, not site change
- **2024 possibilities - TBD**
  - Beijing - China Chapter
  - Open to proposals from any non-US sites
  - <https://bit.ly/isdcHostGuide>
- **2025 possibilities - likely July 20-24, 2025**
  - Worcester, Massachusetts - DCU Center or WSU campus
  - Greater Boston as default location - considering Brandeis, Hyatt
  - WPI team (Oleg Pavlov, Raafat Zaini, Mike Radzicki, Khalid Saeed, Karim Chichakly) engaged as potential organizing host, but conference will not be held on WPI campus due to unavailability

# Future Conference Discussion

---

Suggestions welcome for potential hosts, locations, and venues

- Geographic Location
- Venue Amenities
- Different Host Functions - multiple “Hosts” welcome
  - organizational support
  - sponsorship
- “Local” is not as important of an attribute for a Host as a **willingness to work with vendors and support the Society**

# ISDC Host commitment

---

- Being a conference host is an important part of the conference, and critical to its success. A strong commitment by the host and a clear and direct connection between the host and the central office helps create predictable and manageable location costs. Central office costs, while not under the control of the conference host, are influenced by the completeness of the local arrangements.

See also:

- <https://bit.ly/isdcHostGuide> Local Host Guidelines
- <https://bit.ly/isdcPreProposal> Pre-Proposal Worksheet
- <https://bit.ly/isdcResume> Conference Resume

# Local sponsorship can offset event costs

---

- Any facility charges
- Refreshment breaks
- AV equipment
- Poster boards or rentals
- Required local transportation
- Banquet
- Social hour(s)
- Welcome Reception
- Student-Organized Colloquium/Policy Council Luncheon
- Advice on trusted vendors
  - Satchels and Pens, Printed Abstract Proceedings (items purchased locally)

# Local organization management support\*

---

- Engagement of staff/colleagues in presenting papers, participating, and encouraging peers to attend the conference
- Encourage client co-authorship and attendance
- Welcoming address and institutional support (welcome reception, guest speakers, audio-visual equipment, office supplies, partial sponsorship of banquet, etc.)
- Staff time for preparation (organization & program) and conference (support staff & student interns)
- Annual sponsorship of the SD Society
- Encourage staff to volunteer in the organization of the social agenda

\* Can decrease costs and enhance attendees' experience

# Past Examples of Host Responsibilities

---

- Gather about 12 volunteers, including “professional” person for registration desk
- Provide all supplies and equipment for the conference office
- Photocopy all of handouts in advance of the conference
- Help at conference (to do everything): registration desk, carry boxes, satchel stuffing, etc.
- Obtain local sponsorship
- Conduct "local research" (for example, looking into alternative housing for students, different modes of transportation, anything that will make the participant’s stay better and easier).

# Past Examples of Host Activities

---

## **Activities to lower cost:**

- Loan own AV equipment to defray rental costs (or obtain sponsorship)

## **Traditional activities that may not happen without host or sponsorship backing:**

- Host newcomer/welcome reception
- Dinner for satchel stuffing volunteers
- Host Policy Council “Meet and Greet”
- Find local sponsors
  - examples: free bottle of wine with dinner, free drink with dinner, dinner discounts, car rental discounts, discounts on events



# General Conference Schedule and Criteria

---

<https://bit.ly/isdcResume>

Usually Sun-Thurs (or Mon-Fri, as for 2022)

- Pre-conference Sunday: A pre-conference day for the Policy Council Meeting (30) and the Student-Organized Colloquium (100).
- Monday - Wednesday: The conference officially starts on Monday. There are three full days of conference meetings and some evening events.
- Thursday: On the fourth day we run the workshops. Conference debriefing meeting.
- Occasional Friday for meetings, training, etc. or online-only events.

# Announcements

# 2021 Policy Council Meetings

---

Last Wednesday of Each Month (4 - 5:30pm New York, 9-10:30pm London, 7-8:30am Brisbane)

December PC Meeting : Dec 15th

## November 24, 2021

- 0:15 Budget (Eliot Rich)
- 0:10 STFF Guidelines (Sara Metcalf)
- 0:10 SPOC report out (Sara Metcalf)
- 0:05 Investment Committee (New Policy/Risk/Plan Discussion) #3
- 0:15 AVPs
- Strategy Recap - Accomplishments (Paulo Goncalves)
- 0:15 Project Team Report Outs (2 minute each - 1 slide - champion, team, what, timeframe, resource needs)

Adjournment