

Figures.

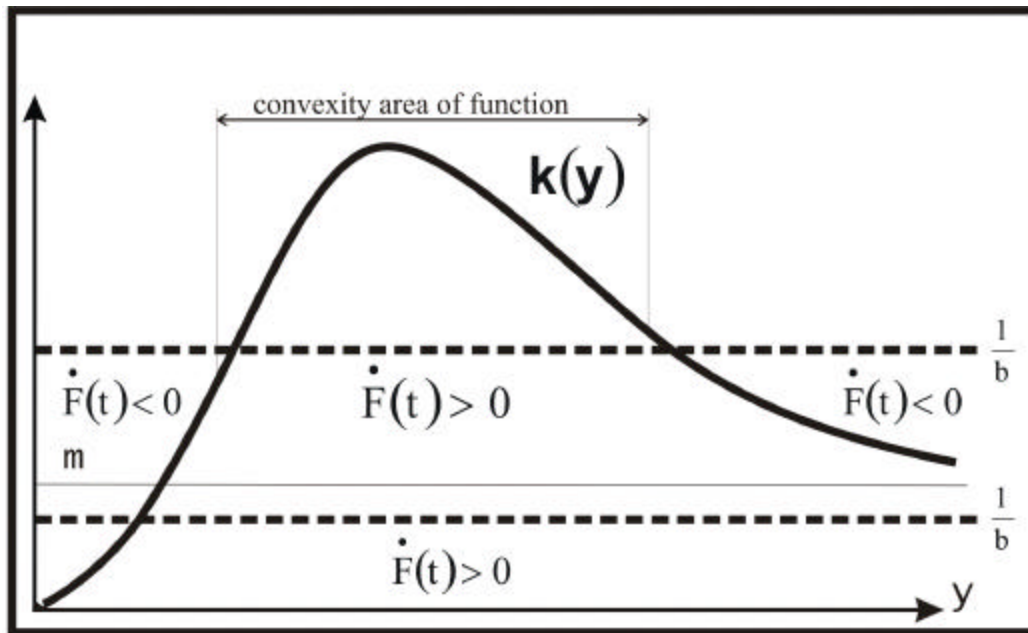


Figure 1. Functions $F_F(y) = \frac{1}{b}$ for the different values b and roots of equation $F_F(y) = k(y)$

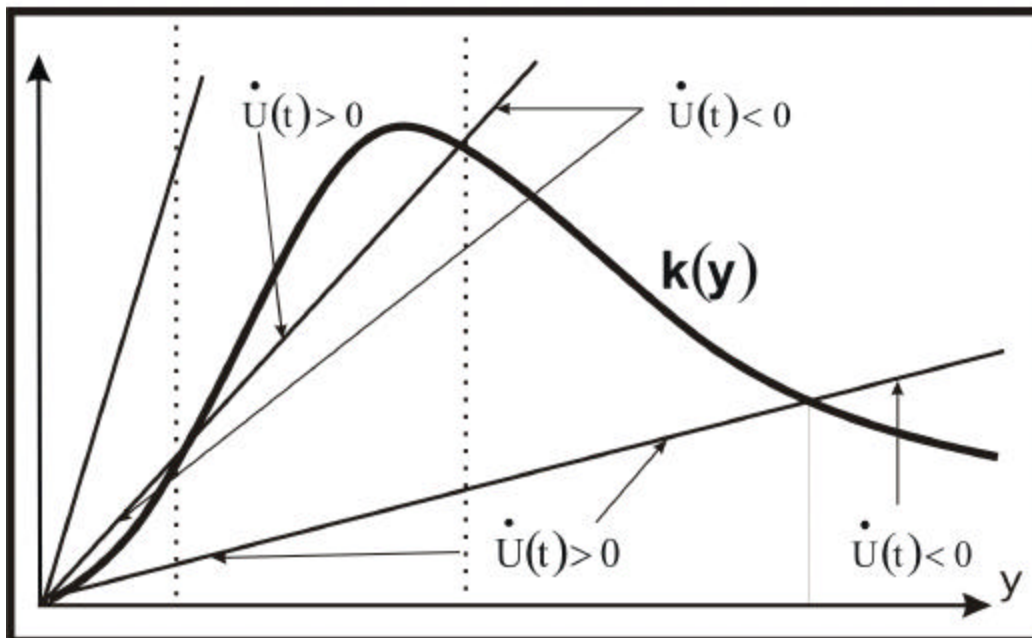


Figure 2. Functions $F_U(y) = \frac{\lambda}{v} \cdot y$ for the different values $\frac{\lambda}{v}$ and roots of equation $F_U(y) = k(y)$

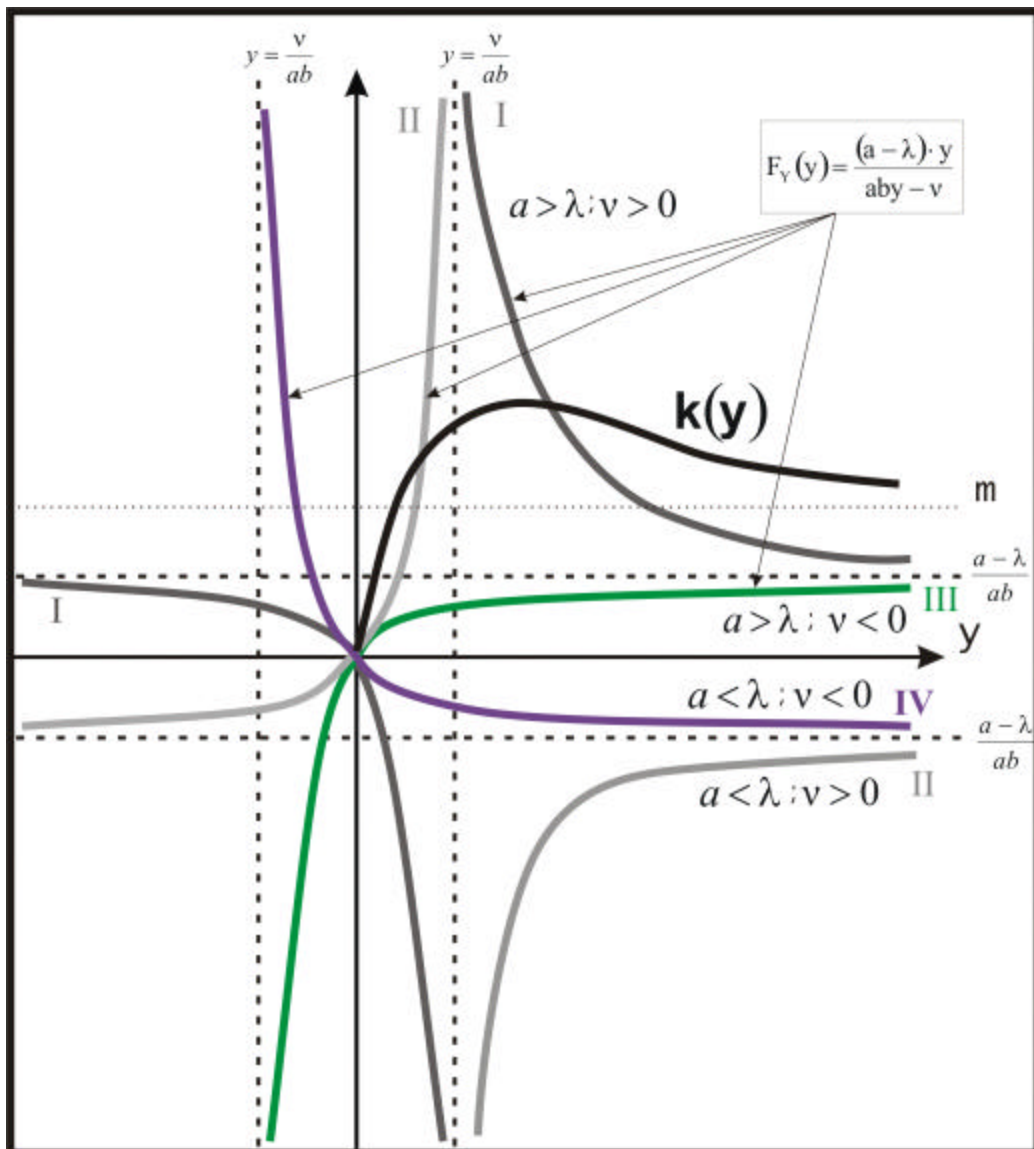


Figure 3. The possible cases of curve $F_v(y) = \frac{(a-\lambda) \cdot y}{a \cdot by - v}$

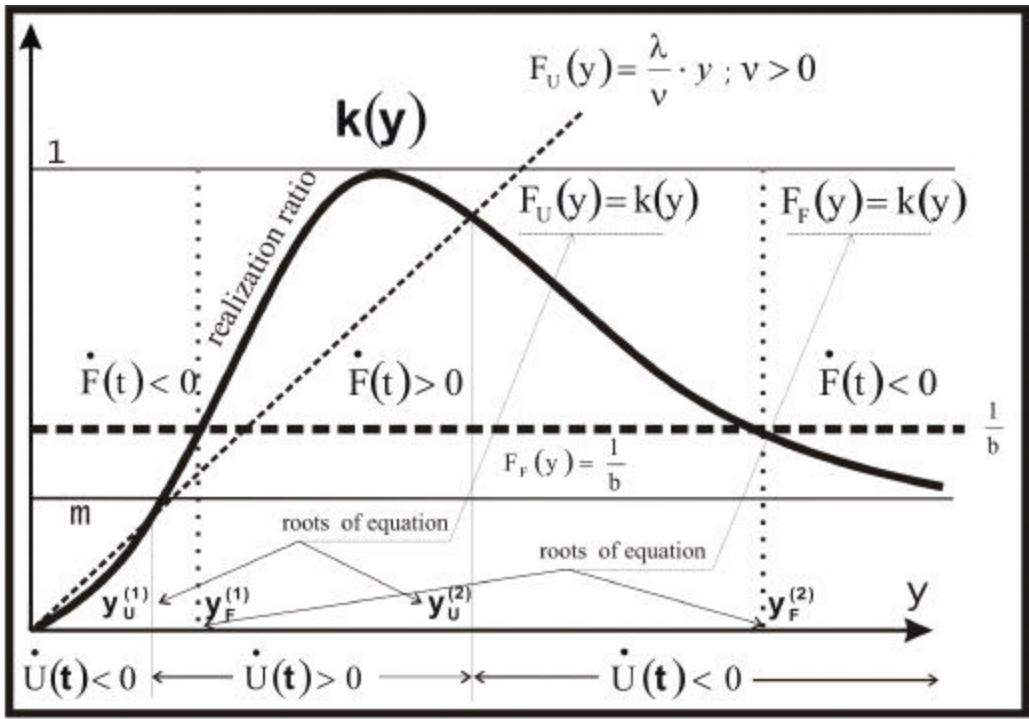


Figure 4.

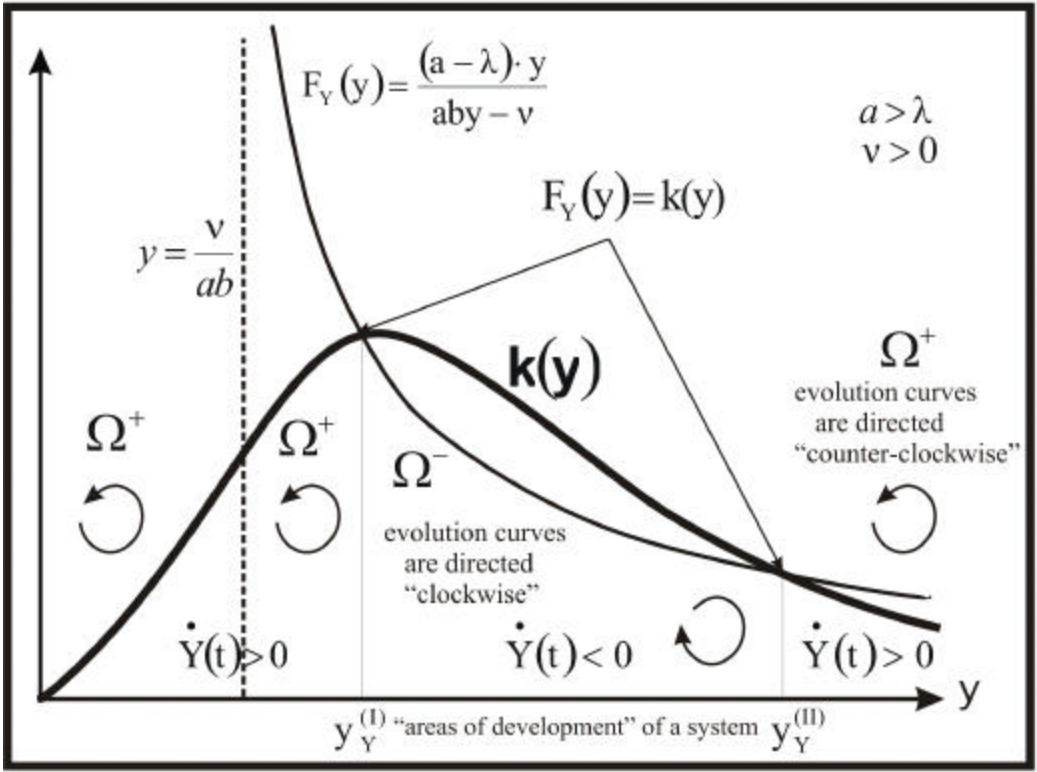


Figure 5.

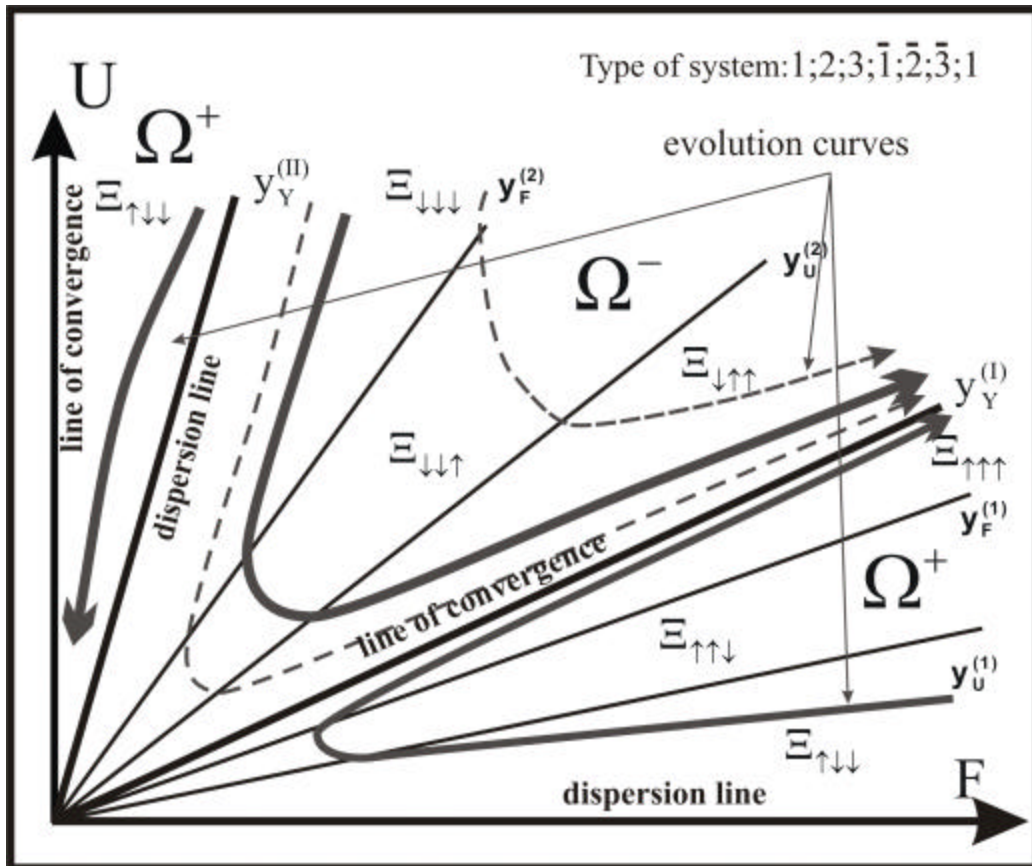


Figure 6. Evolution curves, “options of development” and “areas of development”

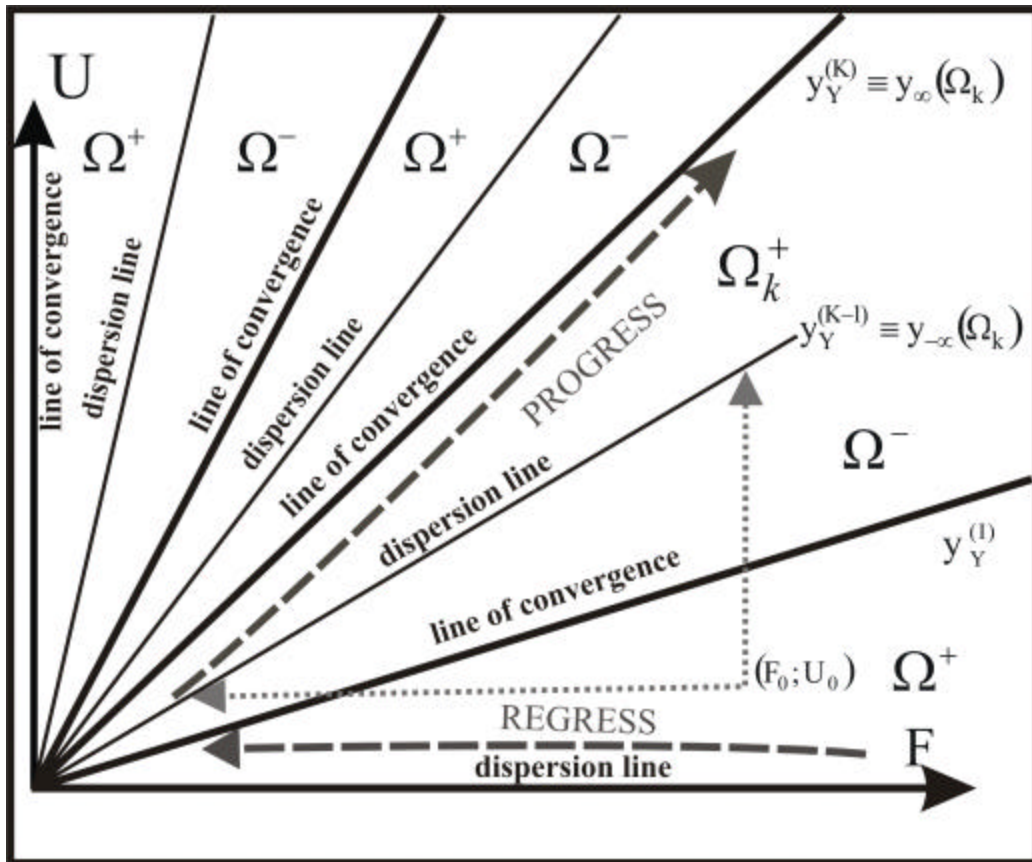


Figure 7. “Areas of development” and transitions from one “area” to the other.

Figure 8. The different types of the systems.

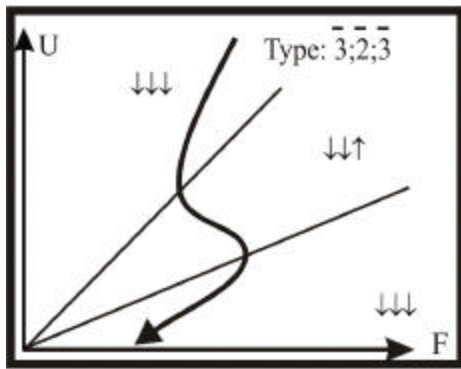


Figure 8.1. A110.

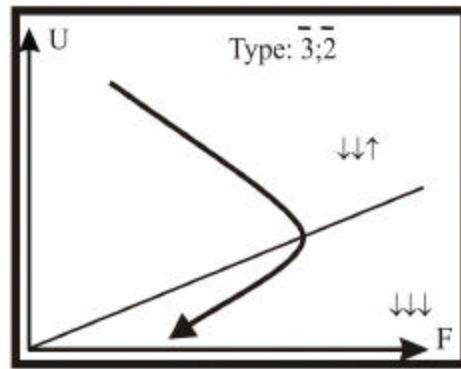


Figure 8.2. A210.

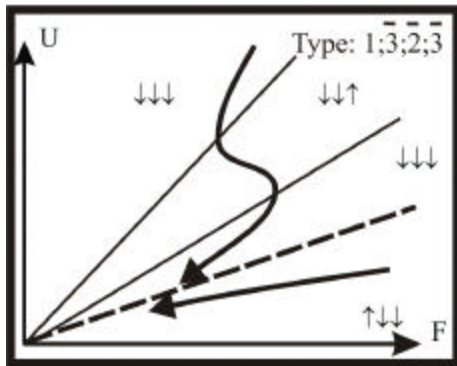


Figure 8.3. A111.

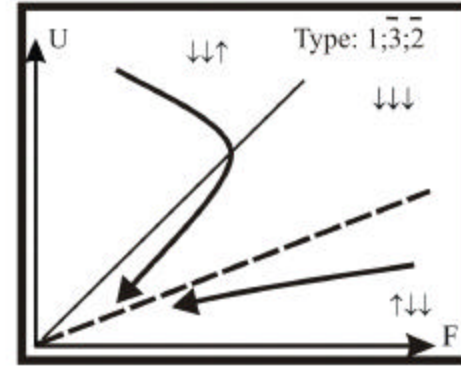


Figure 8.4. A21.

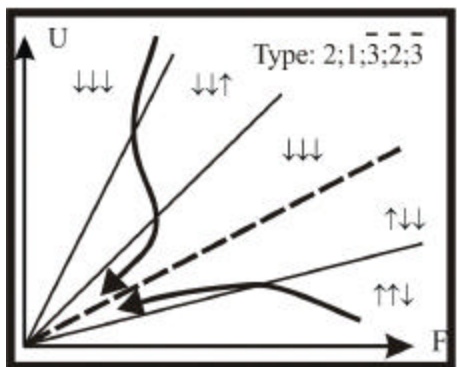


Figure 8.5. A12a

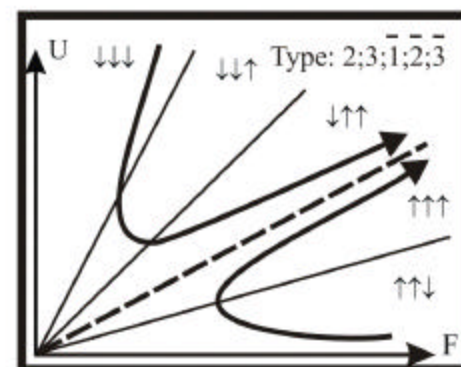


Figure 8.6. A12b

Figure 8. The different types of the systems.

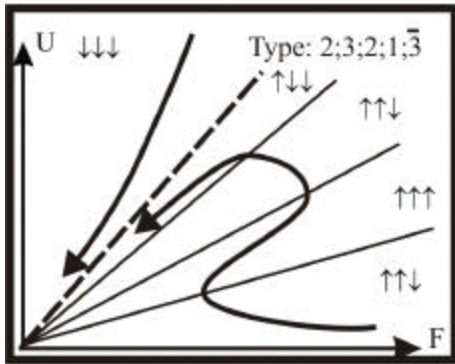


Figure 8.7. A12c

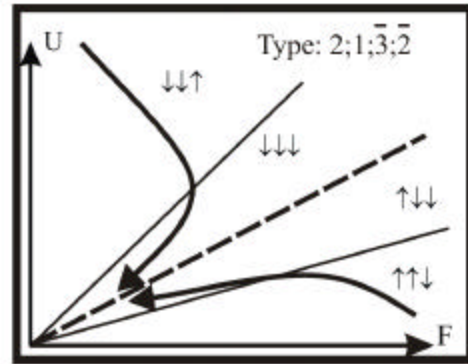


Figure 8.8. A22a

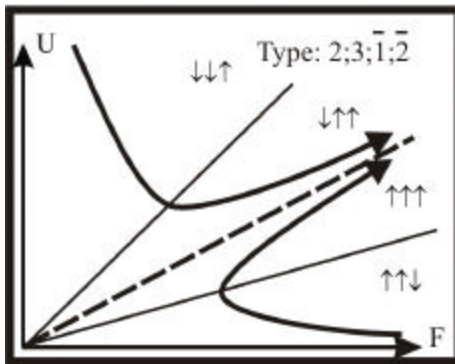
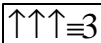



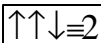



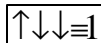



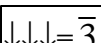



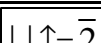



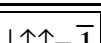





Figure 8.9. A22b

Tables.

Table 1. Classification of "options of development".

 - the growth of parameters;
  - the diminution of parameters.

"Options of development" (designation)	The "conditions to potential ratio" Υ ("intensive-extensive").	The "conditions" \mathbf{U} ("effective-ineffective").	The "potential" \mathbf{F} ("progress-regress").	"Options of development" (name)
				-intensive effective progress
				-intensive effective regress
				-intensive ineffective regress
				-extensive ineffective regress
				-extensive ineffective progress
				-extensive effective progress