

CISD -- A NORMATIVE METHOD FOR TECHNOLOGY ASSESSMENT

Lin Ruiji

Department of Management, Shenzhen University
Shenzhen, Guangdong, People's Republic of China

ABSTRACT

The formal KSIM (Kane's SIMulation) model is equivalent to a particular system dynamics (SD) model. On the basis of this equivalency, we use the KSIM and cross-impact concepts to simplify the SD modeling steps, and a new procedure -- CISD from the abbreviation for Cross Impact System Dynamics which is technically simpler and more normative, has been introduced. CISD is well applied in the field of Technology Assessment (TA). An example for TA of agricultural chemicals with CISD is presented. A general computer program for CISD which is called CISD-FORTRAN makes CISD procedure more widely used with facilities even for nonspecialists.

INTRODUCTION

Technology assessment, a relatively new and innovative concept emerged in the middle of the 1960s, began to change the common ideas people had for a long time about the social and economic functions of science and technology. It promotes the public policy and decisionmaking process for programming technological developments. The term "technology assessment" was first appeared in a report submitted to the U.S. Congress by the former congressman Emilio Q. Daddario in 1966, and it was described as "a form of policy research which provides a balanced appraisal to policymaker". "It identifies policy issues, assesses the impact of alternative courses of action, and presents findings. It is a method of analysis that systematically appraises the nature, significance, status, and merit of the technological program".

Methods used in TA can be divided into three types: (a) qualitative methods, (b) quantitative methods, (c) modeling and simulation methods. System dynamics is one of simulation methods for TA. The "Limits to Growth" was the earliest and most significant application of SD to a problem-oriented TA project sponsored by the Club of Rome, thereafter, SD has been more noticeably applied to different TA problems. However, we are facing difficulties to build a general TA model using SD because of its following deficiencies:

1. A SD model lacks generalization. The model is directed to the specific problem and it suffers a lot of changes as the problem changes a little.
2. SD is technically complex. Modelers are required to be familiar with the system they are modeling and adept in the SD methodology and DYNAMO programming.
3. System structure and policies tested are based on modeler's intuition, the real decisionmakers are not participative in the modeling process for some technical reasons.

In generally speaking, subjective and psychological factors play important roles in TA problems (both technology-oriented and project-oriented), therefore expertises of wide range are critical for a TA program. On the other hand, some TA programs are time-pressed, i.e., final policies for a technological utilization or development should be made in a short term because the recent technologies are speedily evolved and strongly competitive for commercial and economic purposes. All these call for a method with simplicity and generalization which not only can congregate the expertises in a model, but also can reflect the dynamic behaviour of second and higher order impacts which the technology under evaluation makes on natural environment, human society, sovereign economy and technology itself.

This paper will give a method which is called CISD from the abbreviation for Cross Impact System Dynamics. CISD uses a Cross Impact Matrix (CIM) to portray the causal interactions system elements, and the quantitative relations of system variables are

expressed in the form of KSIM equations. CIM can be identified through Delphi, brainstorming and other methods. To some extent, CISD is a comprehensive combination of SD and KSIM. It is characterized by simplicity, conciseness and its standard format, and therefore becomes an effective method for TA.

A BRIEF STUDY ON SD

A General Model of SD

Causal diagrams or flow charts essentially indicate the causal interactions among system variables. These causal interactions are further divided into two specific types referred to as the material relation and the information relation.

The material causal relations determine the flow paths in flow charts. If two quantities are materially related, one of them, say q_i , will accumulate the net effect of the other quantity q_j , the quantity q_i is called affected variable and q_j affecting variable. More generally, causal relations of this type can be represented by the following differential equation when there are n affecting variables:

$$\dot{q}_i = f_i(q_1, q_2, \dots, q_n) \quad q_i(t_0) = q_{i0} \quad (1)$$

In physical meaning, material causal relations reflect the law of conservation of matter within the universe. Examples of this type of causality are the relationships of petroleum reserves to petroleum consumption, of savings to compounded interest, of population to births and deaths, only to name some. This type of causal relation can also delineates the dynamic, cumulative, and memory-possessing characteristics of the system. In flow diagrams, material flow paths are only through the levels and rates, the level equation gives the form of their relations:

$$\begin{aligned} L & \quad L.K = L.J + DT*(RIN.JK - ROUT.JK) \\ N & \quad L = L_0 \end{aligned}$$

$$\begin{aligned}\frac{dx}{dt} &= \lim_{DT \rightarrow 0} \frac{L.K - L.J}{DT} = \lim_{DT \rightarrow 0} (RIN.JK - ROUT.JK) \\ &= r_{in} - r_{out} \quad , \quad x(t_0) = x_0\end{aligned}$$

The rate can be written in the form of the decision function

$$r = f(x, y, p) \quad (2)$$

therefore, we have

$$\frac{dx}{dt} = f(x, y, p) \quad x(t_0) = x_0 \quad (3)$$

where x , y , r , p are the vector forms of levels, auxiliaries, rates, and parameters respectively.

Information causal relations, on the other hand, determine the information path in a flow chart. Information is needed when decisions are made, therefore, the information path actually embodies the decisionmaking process. If two quantities are informationally related, the affected one will be decided by the affecting one but not accumulate the net effect of it over time, i.e., the information causal relations are memoryless, they affect each other instantaneously. This type of causality can be more generally expressed as a functional equation:

$$q_i = g_i(q_1, q_2, \dots, q_n) \quad (4)$$

In system dynamics, its specific vector form is

$$y = g(x, y, p) \quad (5)$$

To conclude, all SD equations can be written in general form as equations (1) and (4), or in the vector form as equations (3) and (5). Level equations are obtained through integrating the equation (3).

$$x = x_0 + \int_{t_0}^t f(x, y, p) dt = x_0 + \int_{t_0}^t r dt \quad (6)$$

The SD Modeling Process

Although many authorities have summarised the stages of the SD modeling process in their literatures, we here show a standard five steps of SD modeling:

1. Conceptualization model. Identifying and conceptualizing the problem under study literally, this may include problem definition, the purpose, condition and specific requirement of the model, reference behaviour modes, etc.
2. Causal diagram model. Reflecting different causal interactions among system variables.
3. Flow chart model. Representing the inner feedback structure of the system.
4. DYNAMO model. Quantifying the couplings of variables appeared in the flow chart.
5. Model tests. Sensitivity analysis, policy tests and analysis, model validity and development, etc.

KSIM MODEL AND ITS SIMILALITY TO A SD MODEL

A general KSIM model can be written as follows:

$$\frac{dx_i}{dt} = -(c_i + \sum_{j=1}^n (a_{ij}x_j + b_{ij} \frac{dx_j}{dt}))x_i \ln x_i \quad (7)$$

where x_i are the state variables of the system, $i = 1, 2, \dots, n$
 $0 \leq x_i \leq 1$; a_{ij} are elements of the state interaction matrix ($n \times n$) giving the impact of x_j on x_i ; b_{ij} are elements of rate interaction matrix ($n \times n$) giving the impact of dx_j/dt on x_i ; c_i indicate the impact of exogenous intervention on x_i . Equation (7) can be represented in matrix notation as:

$$\frac{dx}{dt} = D(x) (Ax + B \frac{dx}{dt} + C) \quad (8)$$

where A, B, C can be aggregated in a combined matrix (A B C), the diagonal weighting matrix D(x) is defined as

$$D(x) = \begin{pmatrix} -x_1 \ln x_1 & & & 0 \\ & -x_2 \ln x_2 & & \\ & & \ddots & \\ 0 & & & -x_n \ln x_n \end{pmatrix}$$

Here any element $(-x_i \ln x_i)$ in matrix $D(x)$ is called Kane's modulation function.

Equation (7) does not meet the requirement of the rule of consistency in system dynamics, however, by defining $z_j = dx_j/dt$ and enlarging the combined matrix the expression is equivalent to a consistent equation as

$$\frac{dx}{dt} = -(c_i + \sum_{j=1}^n a_{ij} x_j) x_i \ln x_i \tag{9}$$

or in matrix form as

$$\frac{dx}{dt} = -(C + Ax) D(x) \tag{10}$$

Comparing Eq. (10) with SD equation (3), we obviously find that the former is a particular form of the latter. Further assuming $r = (C + Ax) D(x)$, we shall write the equivalent DYNAMO equations for Eq. (10) as

$$\begin{array}{ll} L & x.K = x.J + DT*r.JK \\ R & r.KL = -(C + A*x.K)*x.K*LOGN(x.K) \\ N & x = x_0 \end{array} \tag{11}$$

The equation set (11) represents a minimum submodel of SD flow diagram (shown in Fig. 1). A complete KSIM model consists of n submodels of the same form.

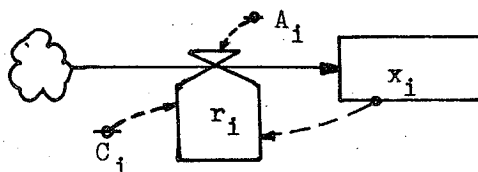


Fig.1 A minimum SD model

CROSS IMPACT SYSTEM DYNAMICS

A Four Step Procedure

As discussed above, the KSIM model is equivalent to a specific SD model, this model is normatively structured by n minimum SD models of the same form. If we introduce a CIM (Table 1) to identify the causal interactions of system variables and the DYNAMO equations are written after the pattern of the equation set (11), a simplified four step modeling procedure CIRD is established on the basis of previous SD modeling steps.

Step one -- conceptualization of the problem (the same as SD).

Step two -- structural interpretation. In this step, system variables are determined and initiated; a CIM which gives the interaction and its strength a_{ij} between any two variables is identified through Delphi.

Step three -- DYNAMO model. The equivalent DYNAMO interpretation of KSIM relations is utilized.

Step four -- model tests.

Table 1 shows the general form of a CIM in CIRD. Variables are

Table 1 The CIM in CIRD

affected variable \ affecting variable	x_1	x_2	...	x_n	c
x_1	a_{11}	a_{12}	...	a_{1n}	c_1
x_2	a_{21}	a_{22}	...	a_{2n}	c_2
\vdots	\vdots	\vdots	a_{ij}	\vdots	\vdots
x_n	a_{n1}	a_{n2}	...	a_{nn}	c_n

binarily interrelated, the total number of elements in CIM is n^2 . The most ostensible difference between CIRD procedure and SD modeling process is the use of CIM to replace the the causal and

flow diagrams for the purpose of indicating the system structure. CIM has a very normative form and always keeps the same whatever changes the system structure. This characteristic of CIM makes the CISD procedure simple and standard.

Comparison Between SD and CISD

Some comparisons between the two are shown in Table 2.

Table 2. Comparisons between SD and CISD

Comparisons in the aspect of:	SD	CISD
1. characteristics	<ul style="list-style-type: none"> -Complex - Generalization-lacking model - Delay and table functions - Wider range of application 	<ul style="list-style-type: none"> simpler normative model no narrower range of application
2. modeling steps	<ul style="list-style-type: none"> - Problem conceptualization - Causal diagram - Flow chart - DYNAMO model - Model tests 	<ul style="list-style-type: none"> problem conceptualization cross impact matrix DYNAMO model model tests
3. the system	<ul style="list-style-type: none"> - Dynamic - Non-linear - System are bounded - No limit to variable's value 	<ul style="list-style-type: none"> dynamic linear open system $0 \leq x_i \leq 1$

The CISD-FORTRAN Program

In order to dilate the application of CISD to nonspecialists who are not familiar with DYNAMO, a FORTRAN program for CISD is compiled. CISD-FORTRAN also produces graphical outputs. A brief scheme is shown in Figure 2.

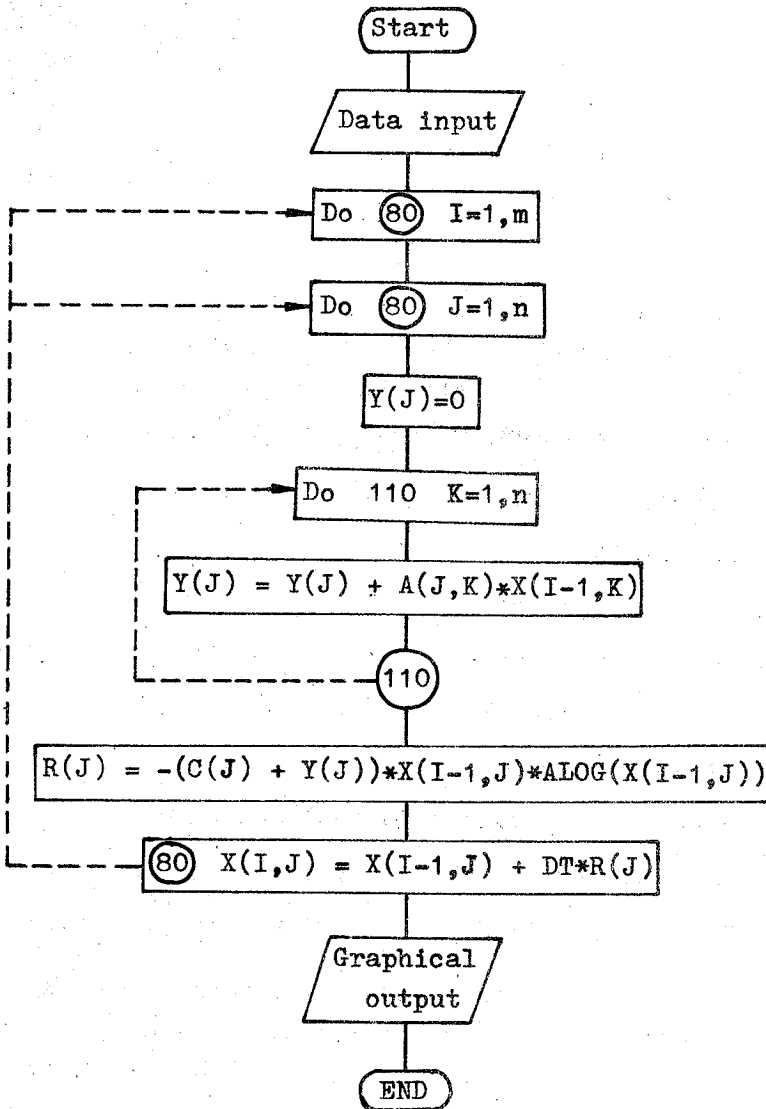


Fig.2 CISD-FORTRAN Program Scheme

AN. EXAMPLE

Agricultural chemicals have played an important historical role in agriculture because they prevent and control the plant diseases, eliminate insect pests. As a result, the agricultural output remains increasing during the past few decades. However, they carry pesticide pollution which makes negative impacts on human health and natural environment (e.g., soil, air, water, etc.) at the same time, TA of agricultural chemicals (TAAC) therefore emerges from necessity. China is the biggest agricultural country with an agricultural population of eight hundred million, it is imperative that we attach great importance to TAAC.

As an example, we coordinate with Zhejiang Research Institute of Chemical Industry to apply CISD to TA of a specific pesticide called Tsumacide, as a result, nine variables are abstracted to describe the impact system as follows:

- x_1 -- chronic toxicity of the pesticide
- x_2 -- its acute toxicity
- x_3 -- the pesticide residue
- x_4 -- the efficacy of the pesticide
- x_5 -- the pesticide production
- x_6 -- the market share
- x_7 -- pesticide user's attitude towards the pesticide
- x_8 -- agricultural product consumer's attitude
- x_9 -- increment of crops and grains

A CIM reflecting the binary interactions of the nine impact variables is obtained through Delphi method and shown in Table 3. Basic runs (one of them shown in Fig. 3) of CISD-TAAC model show that x_1 and x_2 will increase in a small range over time without outside interventions. If outside policies which prevent

Table 3. CIM of CISD-TAAC

	x ₁	x ₂	x ₃	x ₄	x ₅	x ₆	x ₇	x ₈	x ₉
x ₁	0	+1	+2	-1	+1.5	0	0	0.5	0
x ₂	0	0	0	-0.5	+1	0	0	0	0
x ₃	0	0	0	0	+1.5	+0.5	0	0	-0.2
x ₄	0	0	+0.5	-0.5	-0.3	-0.3	+1	0	0
x ₅	-0.1	-1	+0.5* -0.3	+2	-1	-1	+2	0	+1
x ₆	-0.2	-1	+0.2 -0.2	+2	+1	-0.5	+1	0	+0.5
x ₇	-0.1	-2	+0.5	+3	+0.2	+0.2	+1	-0.5	+2
x ₈	-2.5	-0.5	-2	-0.5	0	0	0	+1	+1
x ₉	0	0	-0.4	+2.5	+0.5	+0.3	0	0	0

* Note that here a CLIP function is used:

$$\text{CLIP}(A,B,\text{TIME.K},C) = \begin{cases} A & \text{TIME.K} \geq C \\ B & \text{TIME.K} < C \end{cases}$$

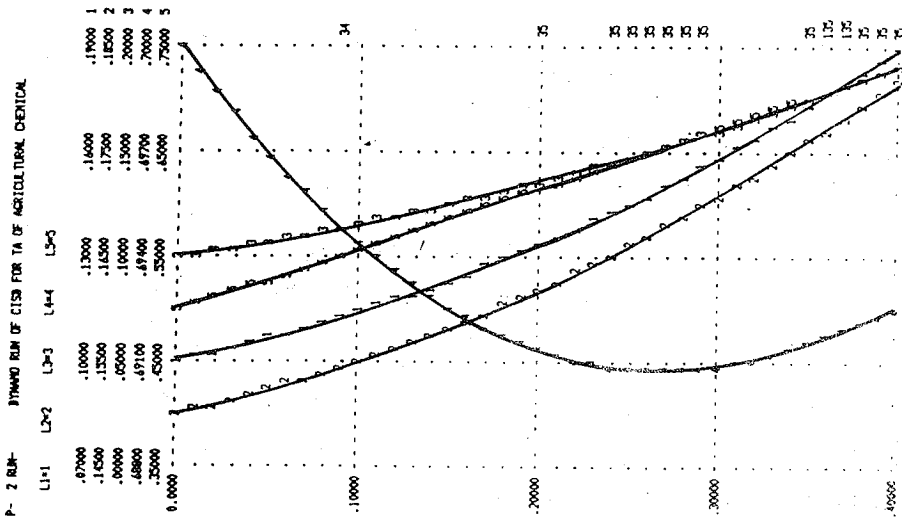


Fig. 3. Basic run of CISD-TAAC

the two kinds of toxicity are added to the model ($c_1 = -1$ and $c_2 = -1$), the curves then decline (shown in Fig. 4). Policies which encourage the pesticide production ($c_5 = +1$) and restrict it ($c_5 = -1$) are tested in the same way. The result shows that the restricting policy is not sensitive to the production, i.e., the demand of the pesticide is decided by the system itself. The encouraging policy promotes the production markedly.

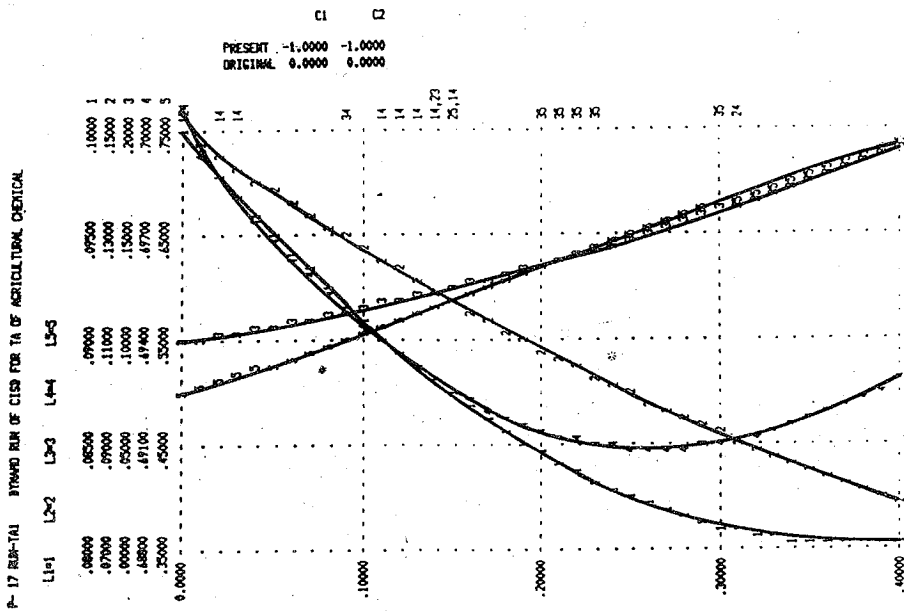


Fig. 4. Changes for rerun of CISD-TAAC

Based on the policy tests, some conclusions and suggestions are reached and submitted in a report to the institute. The brief main points are as follows:

1. Tsumacide is proved to be a pesticide of little toxicity, it can prevent and control plant diseases and pests effectively.
2. Although Tsumacide is slightly poisonous, any toxicity prevented steps can not be neglected.
3. Tsumacide clicks, we suggest that encouraging policies be made for these kinds of pesticides with slight toxicity (e.g., investment prevailing policy).

CONCLUSIONS

System dynamics seems to be more rapidly developed and more widely used in many fields of research in the past one or two decades. But what is its future? Is there any prospective direction that will lead the way for it?

On one hand, system dynamics, as a methodology, should be established on a very firm basis, it has its own logic and rules, theoretical research on SD itself is therefore emphasized. On the other hand, it is an applied tool for modeling socioeconomic system, the simpler it is, the more often it can be used.

This paper not merely introduces the CISD procedure, it is more meaningful that it combines two methods together, and a new simplified procedure is born as a result. Could this "marriage" bring us some revelation for our further SD study?

REFERENCES

- Burns, J.R. (1977) "Converting Signed Digraphs to Forrester Schematics and Converting Forrester Schematics to Differential Equations", IEEE Transactions on Systems, Man, and Cybernetics, Vol. SMC-7 No.8, pp695-707
- Burns, J.R. and Marcy W.M. (1979) "Causality: Its Characterization in System Dynamics and KSIM Models of Socioeconomic System", Technological Forecasting and Social Change 14, pp387-398
- Coates, J.F. (1976) "The Role of Formal Model in Technology Assessment", Technological Forecasting and Social Change 9, pp139-190
- Forrester, J.W. (1968) Principles of Systems MIT Press, Cambridge, Mass.
- Forrester, J.W. (1961) Industrial Dynamics, MIT Press, Cambridge,

Mass.

Forrester, J.W. (1975) Collected Papers of J.W. Forrester,
Wright-Allen Press, Cambridge, Mass.

Kane, J. (1972) "A Primer for a New Cross-Impact Language --
KSIM", Technological Forecasting and Social Change 4,
pp129-142

Lin, R.J. (1986) "Cross Impact System Dynamics and Its Applica-
tions in Technology Assessment", Master Dissertation,
Zhejiang University.

Lin, R.J. (1986) "Some Rules and Characteristics of System
Dynamics", Journal of Shenzhen University, Vol. 3, No. 4,
PP21-30

Linstone, H.A., et al. "The Use of Structural Modeling for Tech-
nology Assessment", Technological Forecasting and Social
Change 14, pp291-327, 1979

Porter, A.L. and Rossini, F.A. (1980) "Technology Assessment
Environmental Impact Assessment: Toward Integrated Impact
Assessment", IEEE Transactions on Systems, Man, and
Cybernetics, Vol. SMC-10, No.8, pp417-424

Richardson, G.P. and Pugh III, A.L. (1981) Introduction to
System Dynamics Modeling with DYNAMO, MIT Press, Cambridge,
Mass.

Roberts, E.D. (1978) Managerial Applications of System Dynamics,
MIT Press, Cambridge, Mass.

White, Jr., K.P. (1981) "A Constructive Approach to KSIM Model
Analysis", IEEE Transactions on Systems, Man, and Cyber-
netics, Vol. SMC-11, No.8, pp571-574